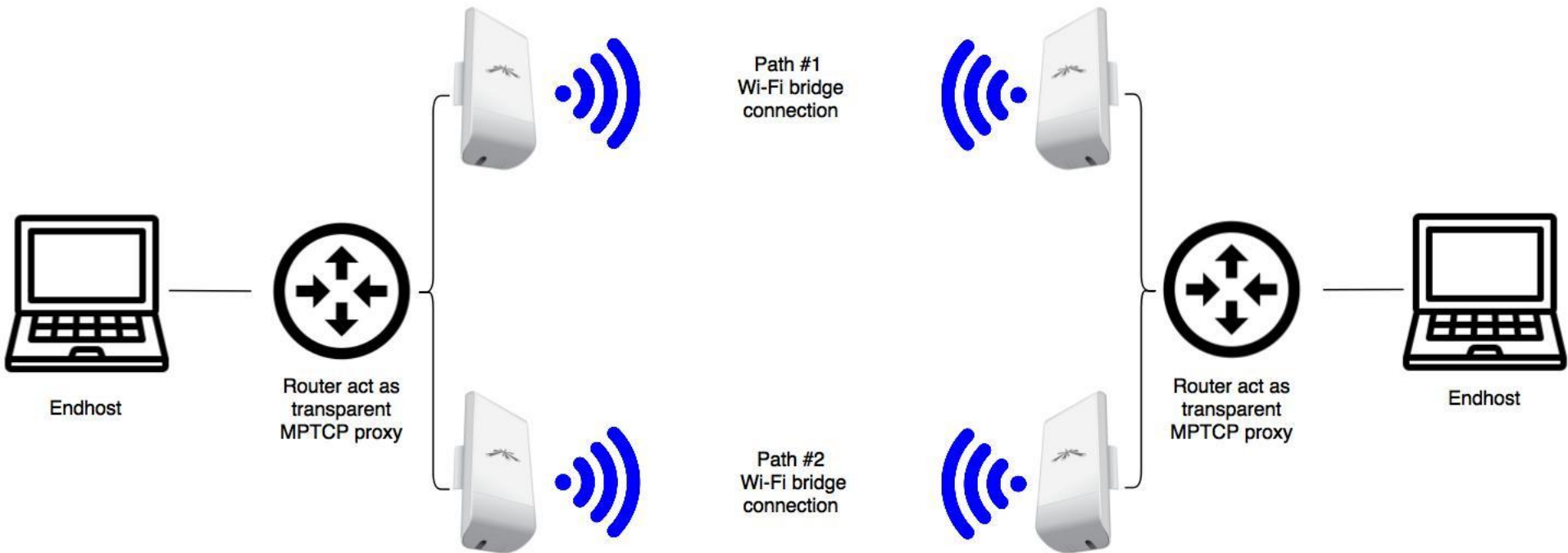


MultipathTCP

Double the speed of the link

Topology



Video

- <https://www.youtube.com/watch?v=1xQQuT9BGul>

TODO

- Stuck at 1 CPU core
- Reuse option in SS for multiple cores
- Kernel package ex:
kernel-mptcp_4.4.56-1-b2f20a_ar71xx.ipk
- Sell a box!
- PROFIT!

Links

- <https://www.youtube.com/watch?v=1xQQuT9BGul>
- <https://blog.freifunk.net/2017/08/28/gsoc-2017-add-mptcp-support-ledeopenwrt-trunk-final/>
- <https://github.com/spyff/lede-mptcp>
- <https://github.com/spyff/shadowsocks-libev-nocrypto>
- EOF!